

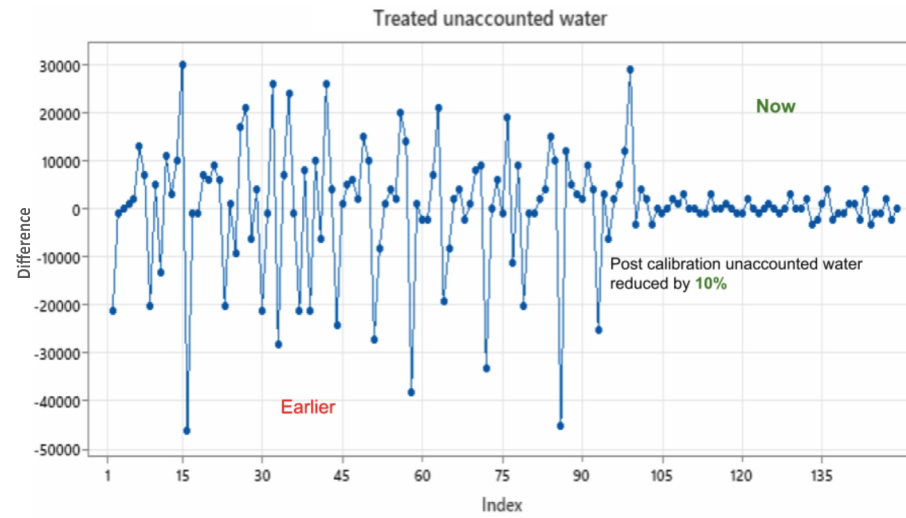
EverSense for WaterMAP

Measure. Analyse. Perform.



Maintaining overall water efficiencies of a plant can lead to improvement in productivity, sustainability and reduce costs. Through our dashboard monitoring, users on average reduce unaccounted water from 20% to 5-10%.

Decisions influenced by water resource management dynamics are increasingly becoming pivotal in shaping the broader aspirations of organisations. In the pursuit of sustainability goals, a holistic approach towards achieving water neutrality is essential. Limited knowledge of design, layouts, baselines, and benchmarks leads to wastage throughout the water cycle. By creating a real-time water balance and minimising deviations, users can establish benchmark KPIs that enhance productivity, lower water usage, and boost savings. Furthermore, this data will be readily available for EHS reporting and can also be integrated into the organisation's ESG report.



We provide actionable insights

Proactive Issue Resolution

Monitoring four pillars (quantity, quality, wastage and cost of operation) at critical measurement points enables water balance. Through this, we provide insights on leakages and wastage. Our deep industry knowledge results in actionable insights to help maintain uptime of >95% for measurements.

Operational Efficiency

We help reduce distribution losses, establish equipment (WTP / STP / ETP) and section level benchmarking. We help establish standard operating procedures (SOPs) for operations of various equipment like pumps, cooling towers and water treatment plants.

Backed by our wide reach and expertise

Our team of sales and service engineers, based in 19 countries, have experience of over 30 industry segments globally. These specialists visit plants daily, understanding and addressing real needs. And now, you have 24x7 access to this expertise through both, digital connects and site visits.



Delivering Benefits



Water Accountability

Sustaining water balance by maintaining >95% uptime for measurements. This enables eliminating water wastage caused by leakages, over-utilisation and trying to achieve optimal quality of water.



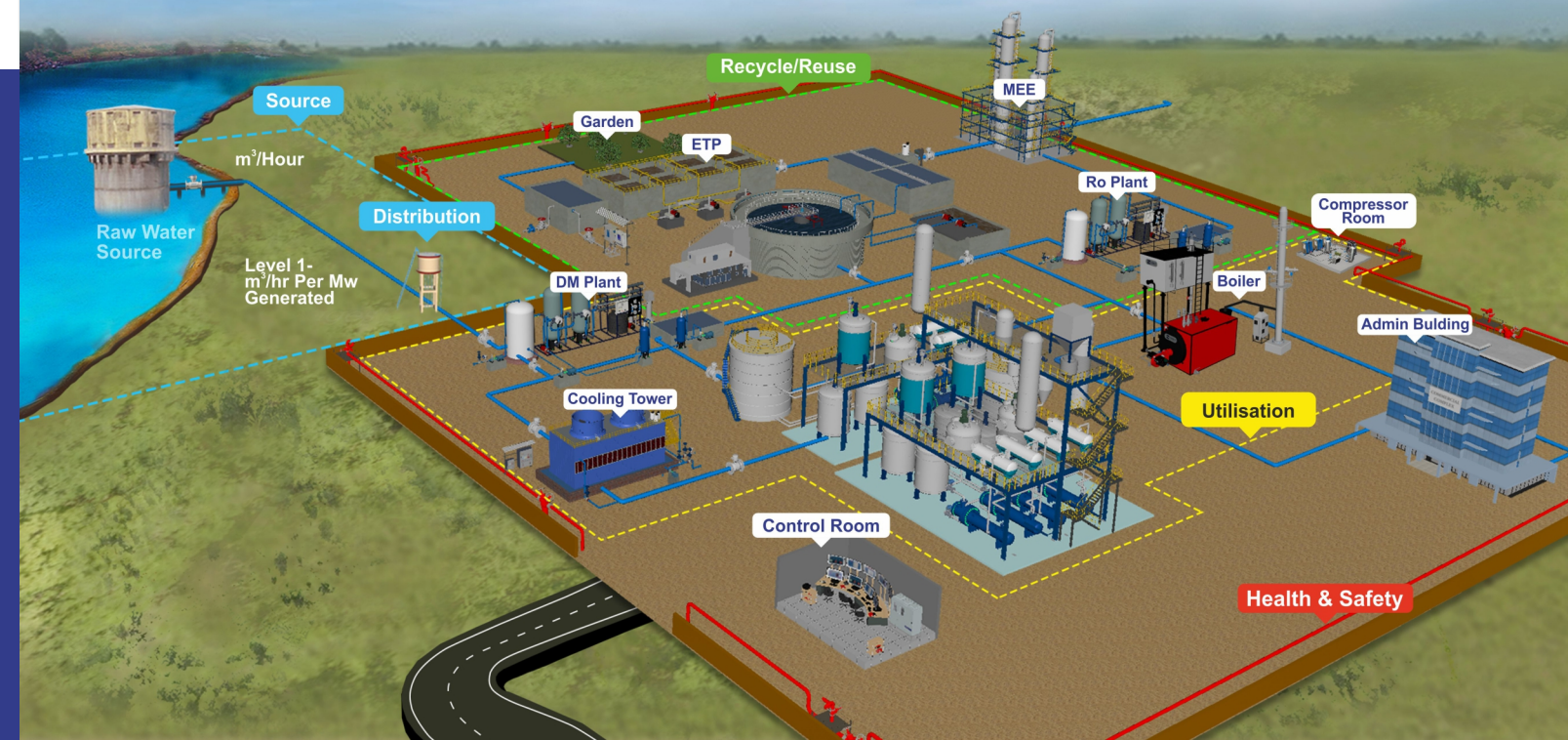
Water Efficiency

Establishing the right key performance indicators (KPIs) enabling the user to utilise the water correctly, maximise its reuse and finally recycle it. Establishing water balance and benchmark consumption.

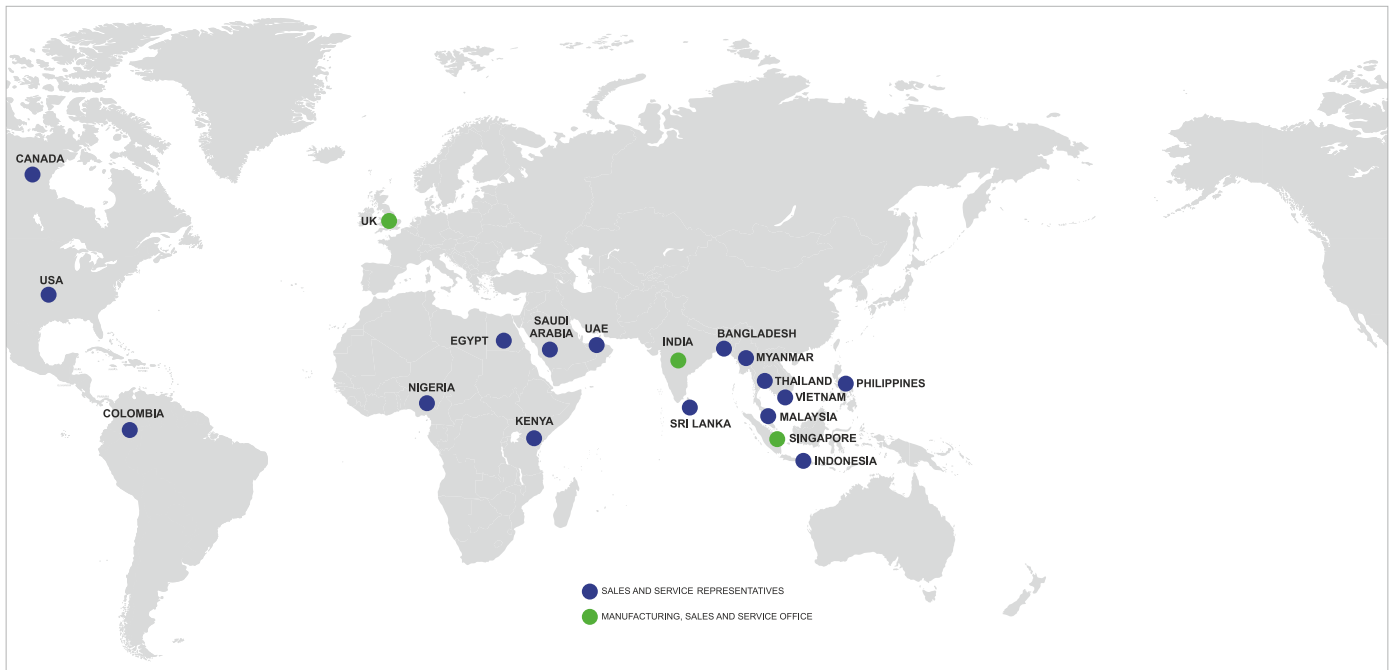


Sustainability

On account of monitoring, we reduce water consumption and sustaining the water table. Reducing electricity consumed by pumps, thereby reducing carbon emissions.



Energising Businesses and Communities Worldwide



A Multinational with Indian Roots

19	Countries
37	Offices Worldwide
18	Distribution Centres
500	Sales and Services Engineers
8,000	Customers Worldwide

World Class Technology from World Class Facilities



Enabling Results



Process Efficiency



Energy Efficiency



Optimum Productivity



Improved Asset Uptime



Environmental Responsibility



Safety and Regulatory Compliance



www.forbesmarshall.com

Forbes Marshall Arca

Codel International

Krohne Marshall

Forbes Vyncke

Forbes Marshall Steam Systems

A: Forbes Marshall Pvt. Ltd.

Opp. 106th Milestone, CTS 2220, Mumbai-Pune Road, Kasarwadi, Pune MH 411034 INDIA

P: +91(0)20-68138555

F: +91(0)20-68138402

E: beyondconnectivity@forbesmarshall.com

CIN No: U28996PN1985PTC037806

© All rights reserved. Any reproduction or distribution in part or as a whole without written permission of Forbes Marshall Pvt Ltd, its associate companies or its subsidiaries ("FM Group") is prohibited. Information, designs or specifications in this document are subject to change without notice. Responsibility for suitability, selection, installation, use, operation or maintenance of the product(s) rests solely with the purchaser and/or user. The contents of this document are presented for informational purposes only. FM Group disclaims liabilities or losses that may be incurred as a consequence of the use of this information.



Scan the QR code to enquire