

# EverSense for WaterMAP

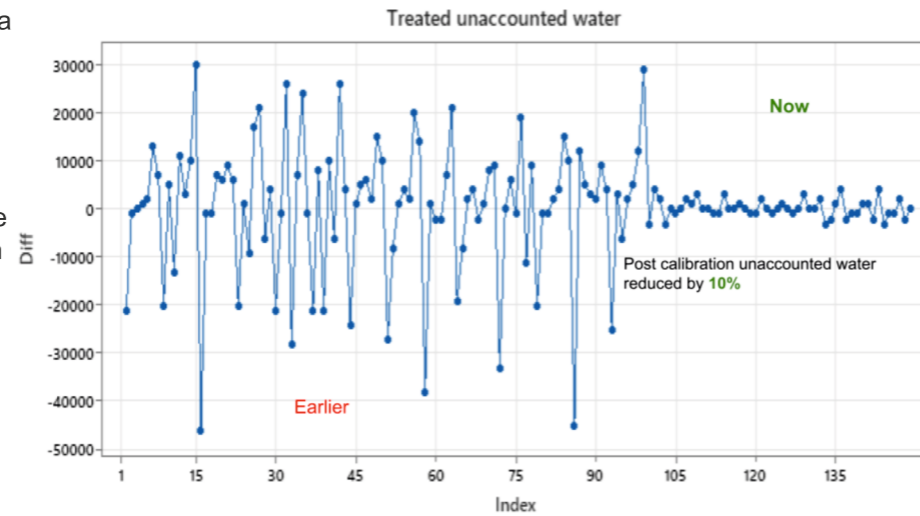
Measure. Analyse. Perform.





## Maintaining overall water efficiencies of a plant can lead to improvement in productivity, sustainability and reduce costs. On average, we reduce unaccounted water from 20% to 5-10%.

Decisions influenced by water resource management dynamics are increasingly becoming pivotal in shaping the broader aspirations of organisations. In the pursuit of sustainability goals, a holistic approach towards achieving water neutrality is essential. Limited knowledge of design, layouts, baselines, and benchmarks leads to wastage throughout the water cycle. By creating a real-time water balance and minimising deviations, users can establish benchmark KPIs that enhance productivity, lower water usage, and boost savings. Furthermore, this data will be readily available for EHS reporting and can also be integrated into the organisation's ESG report.



### We provide actionable insights

#### Proactive Issue Resolution

Monitoring four pillars (quantity, quality, wastage and cost of operation) at critical measurement points enables water balance. Through this, we provide insights on leakages and health of assets (e.g. pumps, valves and pipe sections). Our deep industry knowledge results in actionable insights to help maintain uptime of >95% for measurements.

#### Operational Efficiency

We help establish standard operating procedures (SOPs) for operations of various equipment like pumps, cooling towers and water treatment plants (STP).

#### Backed by our wide reach and expertise

Our team of sales and service engineers, based in 18 countries, have experience of over 30 industry segments globally. These specialists visit plants daily, understanding and addressing real needs. And now, you have 24x7 access to this expertise through both, digital service connects and site visits.



### Delivering Benefits



#### Water Accountability

Sustaining water balance by maintaining >95% uptime for easurements. This enables eliminating water wastage caused by leakages, over-utilisation and trying to achieve optimal quality of water.



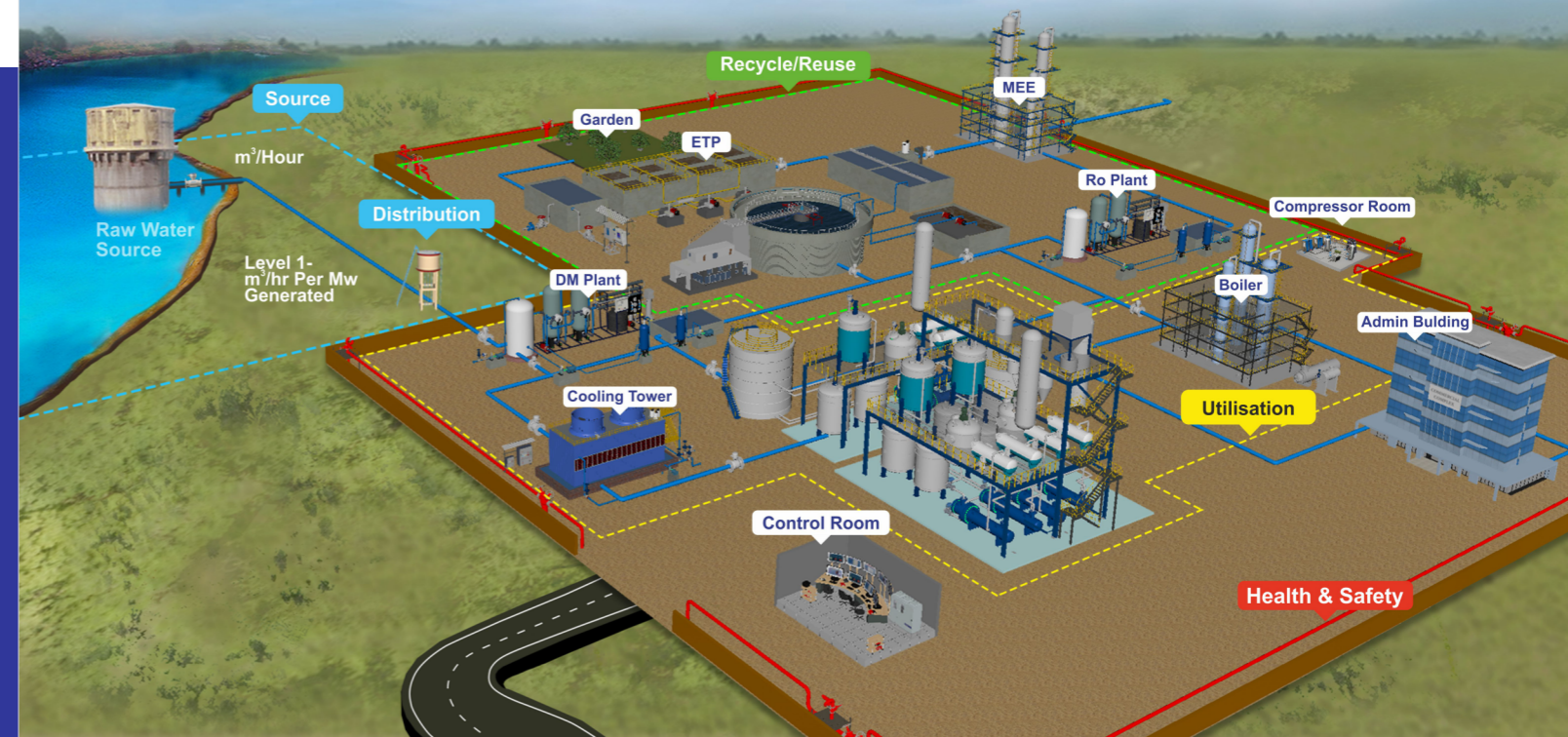
#### Water Efficiency

Establishing the right key performance indicators (KPIs) enabling the user to utilise the water correctly, maximise its reuse and finally recycle it. Establishing water balance and benchmark consumption.

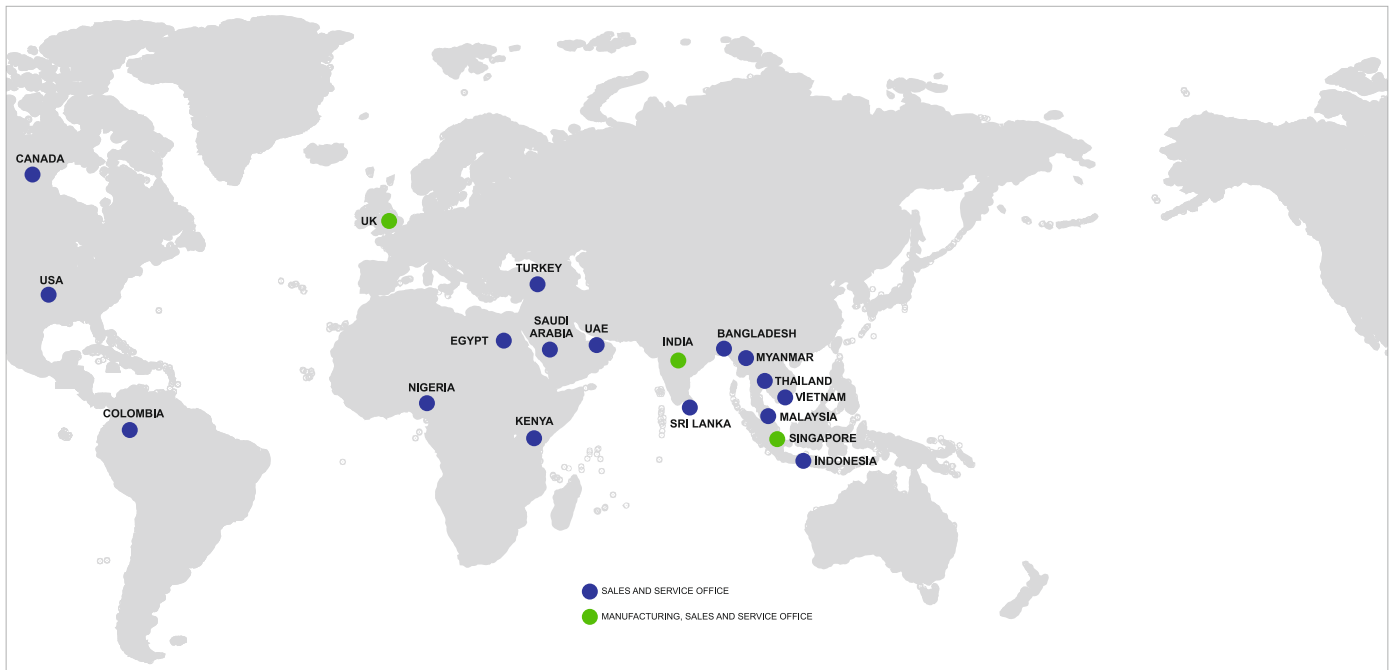


#### Sustainability

Reducing water consumption and sustaining the water table. Reducing electricity consumed by pumps, thereby reducing carbon emissions.



# Energising Businesses and Communities Worldwide



## A Multinational with Indian Roots

18	Countries
37	Offices Worldwide
18	Distribution Centres
500	Sales and Services Engineers
8,000	Customers Worldwide

## World Class Technology from World Class Facilities



## Enabling Results



**Process Efficiency**



**Energy Efficiency**



**Optimum Productivity**



**Improved Asset Uptime**



**Environmental Responsibility**



**Safety and Regulatory Compliance**



[www.forbesmarshall.com](http://www.forbesmarshall.com)

Forbes Marshall Arca

Codel International

Krohne Marshall

Forbes Vyncke

Forbes Marshall Steam Systems

### A: Forbes Marshall Pvt. Ltd.

Opp. 106th Milestone, CTS 2220, Mumbai-Pune Road, Kasarwadi, Pune MH 411034 INDIA

P: +91(0)20-68138555

F: +91(0)20-68138402

E: [beyondconnectivity@forbesmarshall.com](mailto:beyondconnectivity@forbesmarshall.com)

**CIN No:** U28996PN1985PTC037806

© All rights reserved. Any reproduction or distribution in part or as a whole without written permission of Forbes Marshall Pvt Ltd, its associate companies or its subsidiaries ("FM Group") is prohibited. Information, designs or specifications in this document are subject to change without notice. Responsibility for suitability, selection, installation, use, operation or maintenance of the product(s) rests solely with the purchaser and/or user. The contents of this document are presented for informational purposes only. FM Group disclaims liabilities or losses that may be incurred as a consequence of the use of this information.



**Scan the QR code to enquire**