

EverSense for Solvent Extraction Plants

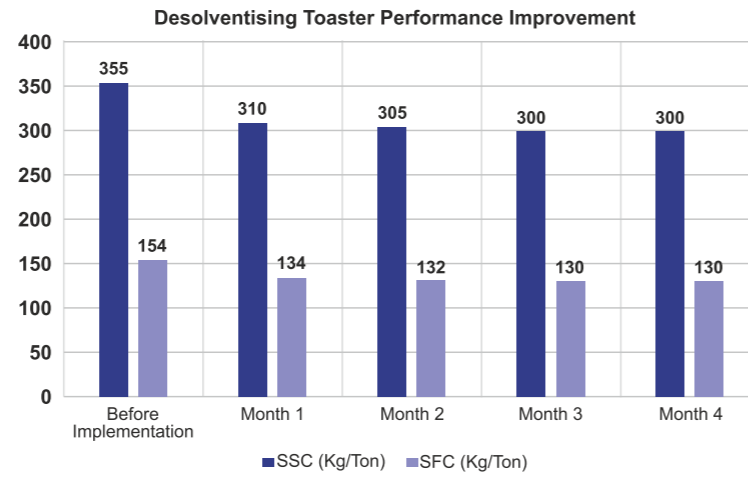


The specific steam consumption and condensate recovery factor of desolventising toaster and heater varies by 20% resulting in increased costs.

In today's dynamic and competitive landscape, where energy costs continue to rise, maintaining an efficient steam system is imperative. An increase in specific steam consumption (SSC) and reduction in condensate recovery factor (CRF) leads to incremental fuel and fresh water consumption and solvent (hexane) consumption.

SSC and CRF variation causes include:

- Design of the steam condensate system
- Uptime of components and control loops
- Manual controlling of direct and indirect steam
- Operating pressures and temperature set-points
- Operational efficiency
- Moisture in seed (varying over time)
- Seed type
- Machine speed
- Operator experience



We provide actionable insights

Proactive Issue Resolution

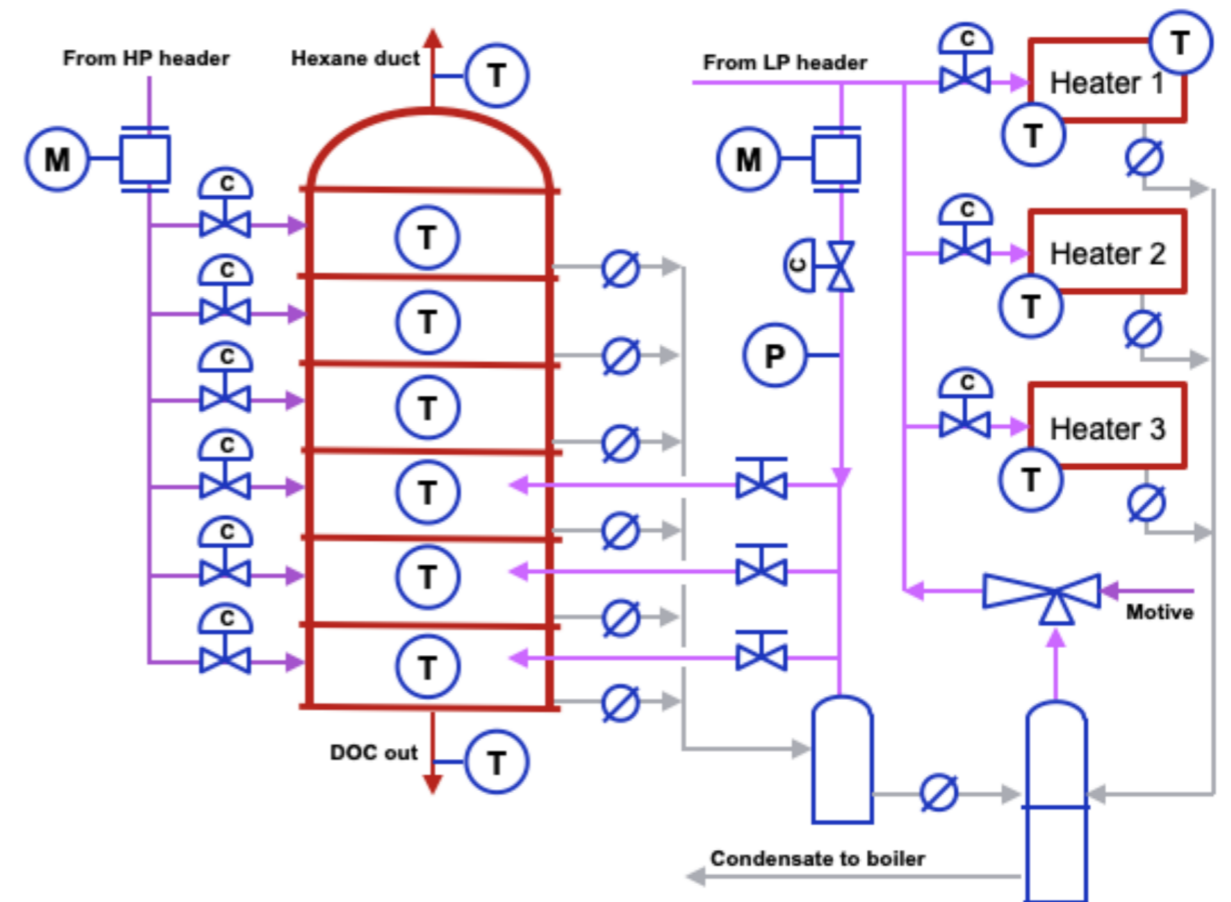
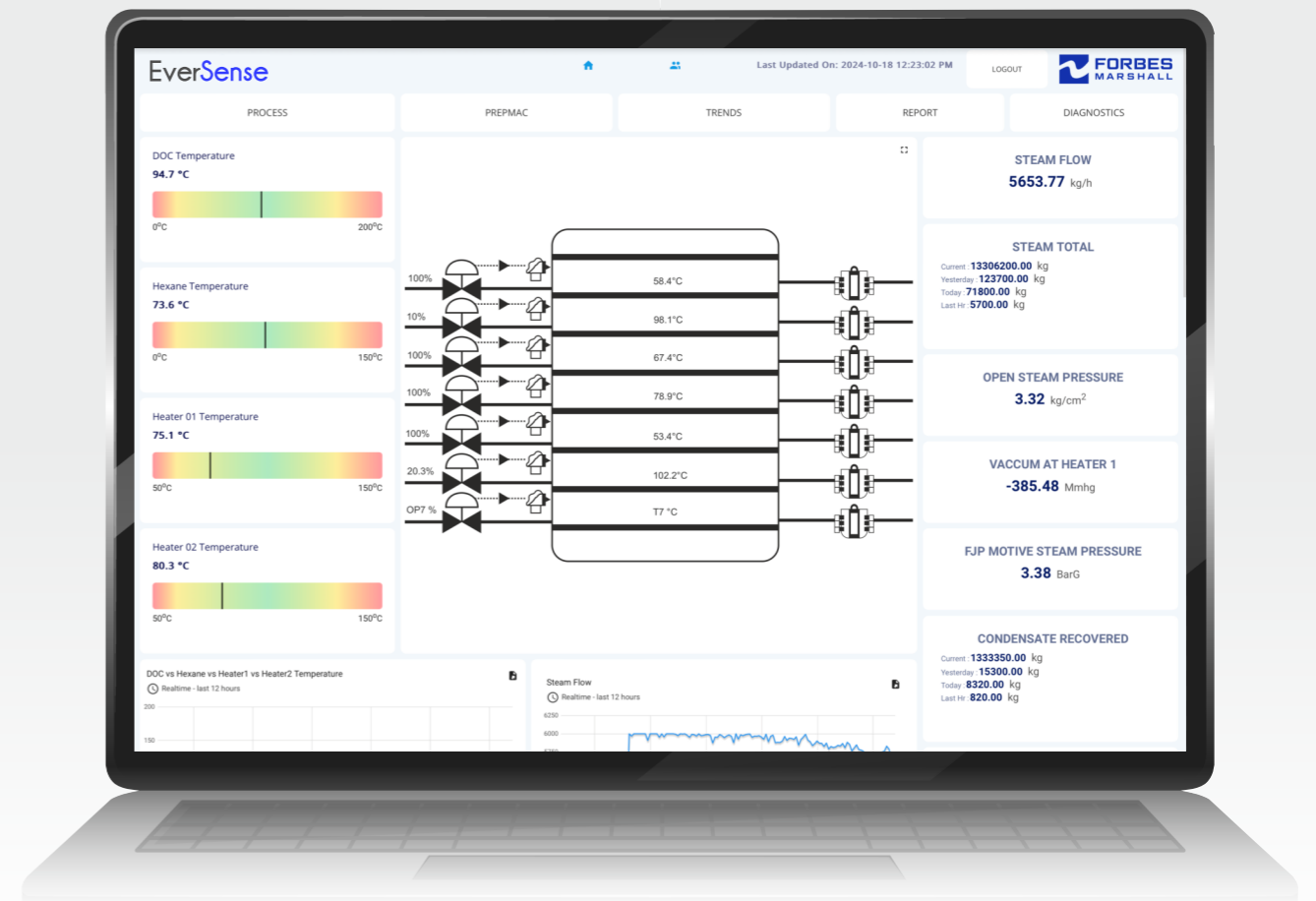
Monitoring chamber wise DOC and hexane temperature for open steam will help integrate and define set-points for compartment wise temperature control, enabling feedback for efficient operation.

Operational Efficiency

We help establish standard operating procedures (SOPs) for different production levels and types. We also provide training to operators on best practices.

Backed by our wide reach and expertise

Our team of sales and service engineers, based in 18 countries, have experience of over 30 industry segments globally. These specialists visit plants daily, understanding and addressing real needs. And now, you have 24x7 access to this expertise through both, digital service connects and site visits.



Delivering Benefits



Reliability
Maintaining >95% uptime.



Fuel Savings
Lowering specific steam consumption and improving condensate recovery.

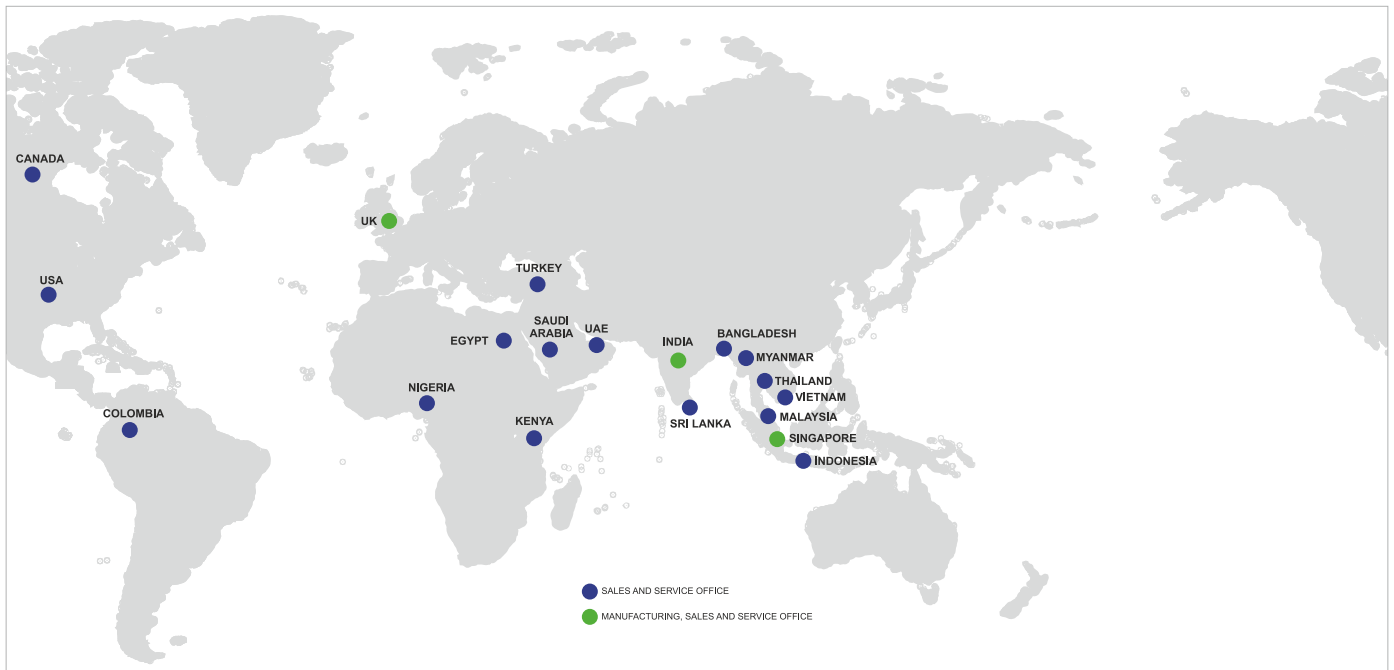


Safety
Establishing standard operating procedures. Identifying anomalies in data to take immediate corrective action.



Sustainability
Reducing water and fuel consumption, and carbon emissions.

Energising Businesses and Communities Worldwide



A Multinational with Indian Roots

18

Countries

37

Offices Worldwide

18

Distribution Centres

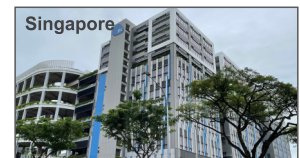
500

Sales and Services Engineers

8,000

Customers Worldwide

World Class Technology from World Class Facilities



Enabling Results



Process Efficiency



Energy Efficiency



Optimum Productivity



Improved Asset Uptime



Environmental Responsibility



Safety and Regulatory Compliance



www.forbesmarshall.com

Forbes Marshall Arca

Codel International

Krohne Marshall

Forbes Vyncke

Forbes Marshall Steam Systems

A: Forbes Marshall Pvt. Ltd.

Opp. 106th Milestone, CTS 2220, Mumbai-Pune Road, Kasarwadi, Pune MH 411034 INDIA

P: +91(0)20-68138555

F: +91(0)20-68138402

E: beyondconnectivity@forbesmarshall.com

CIN No: U28996PN1985PTC037806

© All rights reserved. Any reproduction or distribution in part or as a whole without written permission of Forbes Marshall Pvt Ltd, its associate companies or its subsidiaries ("FM Group") is prohibited. Information, designs or specifications in this document are subject to change without notice. Responsibility for suitability, selection, installation, use, operation or maintenance of the product(s) rests solely with the purchaser and/or user. The contents of this document are presented for informational purposes only. FM Group disclaims liabilities or losses that may be incurred as a consequence of the use of this information.



Scan the QR code to enquire