

# EverSense for Platten Press

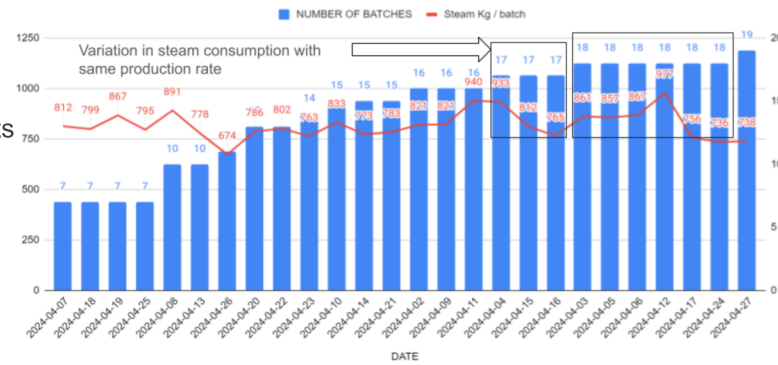


## Steam consumption per batch of platten presses often varies by 20-30%, resulting in increased costs.

In today's dynamic and competitive landscape, where energy costs continue to rise, maintaining an efficient steam system is imperative. An increase in specific steam consumption (SSC) per batch and a drop in condensate recovery factor (CRF) leads to incremental fuel and fresh water consumption.

### SSC and CRF variation causes include:

- Design of the steam condensate system
- Uptime of components and control loops
- Operating pressures and temperature set-points
- Operating procedures
- Ply / laminate quality and type
- Batch time
- Operator experience



## We provide actionable insights

### Proactive Issue Resolution

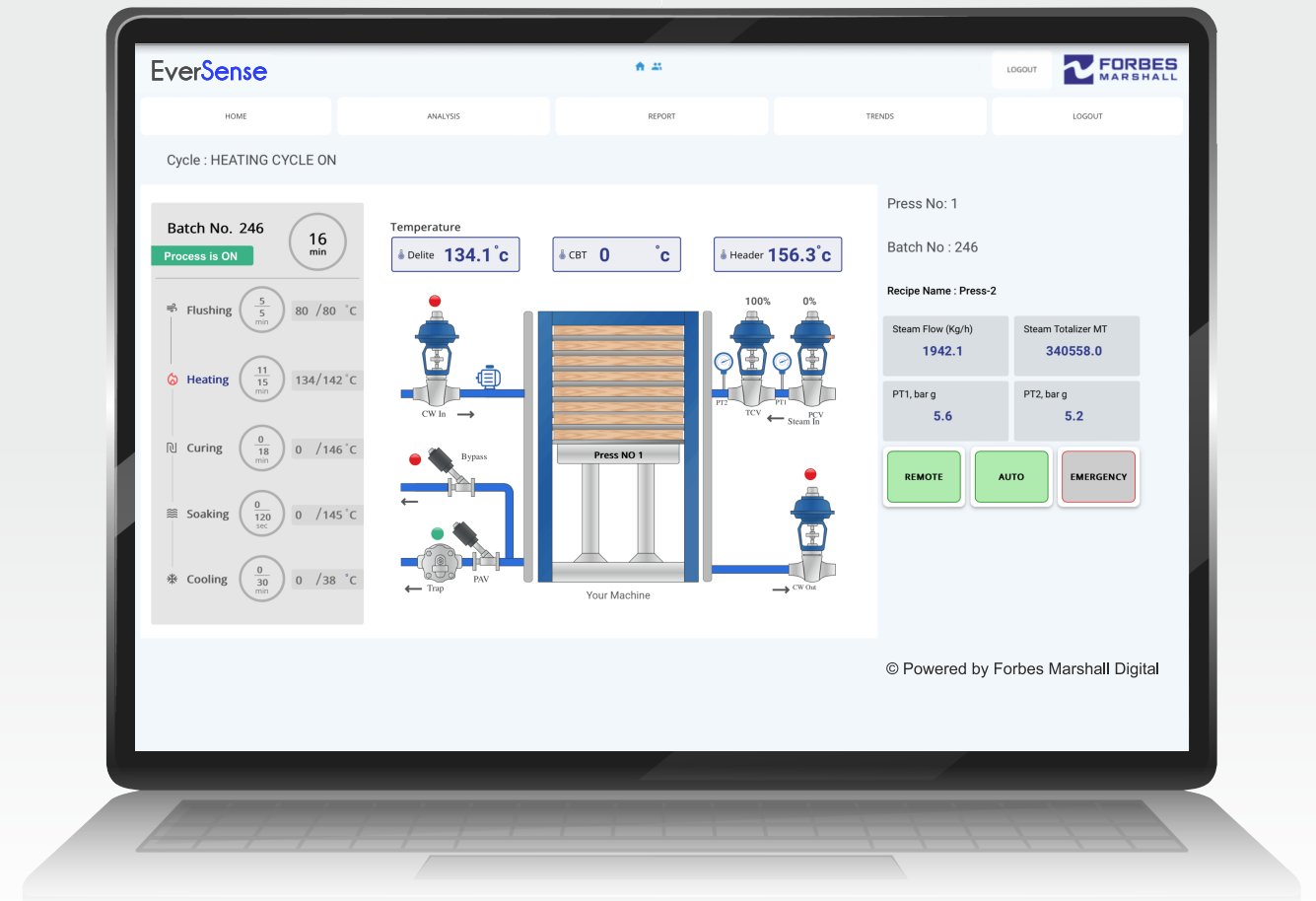
Monitoring right set points and cycle wise profile of the batch and temperatures gives us insights, enabling feedback for efficient operation and improvement in batch time and achieving higher productivity.

### Operational Efficiency

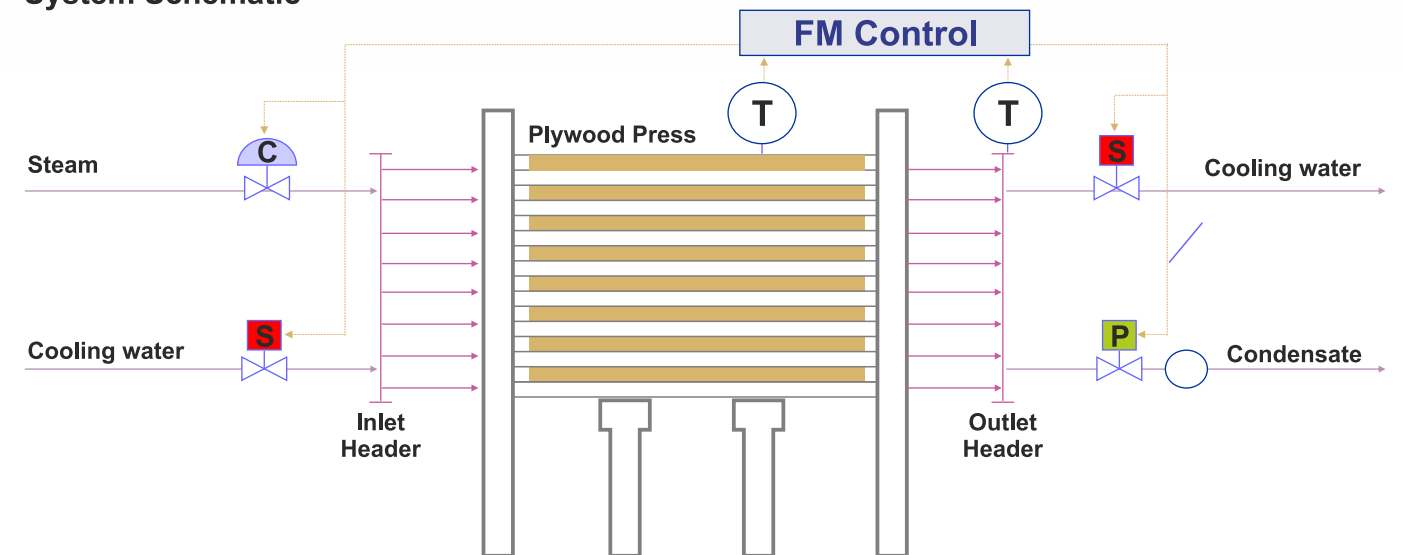
We derive real-time, tangible solutions by monitoring key parameters, to enhance standard operating procedures (SOPs) for different production levels and production types. We also provide training to operators on best practices.

### Backed by our wide reach and expertise

Our team of sales and service engineers, based in 18 countries, have experience of over 30 industry segments globally. These specialists visit plants daily, understanding and addressing real needs. And now, you have 24x7 access to this expertise through both, digital service connects and site visits.



## System Schematic



## Delivering Benefits



**Reliability**  
Maintaining >95% uptime.



**Fuel Savings**  
Lowering specific steam consumption and improving condensate recovery.



**Productivity**  
Increasing productivity and bettering product quality.

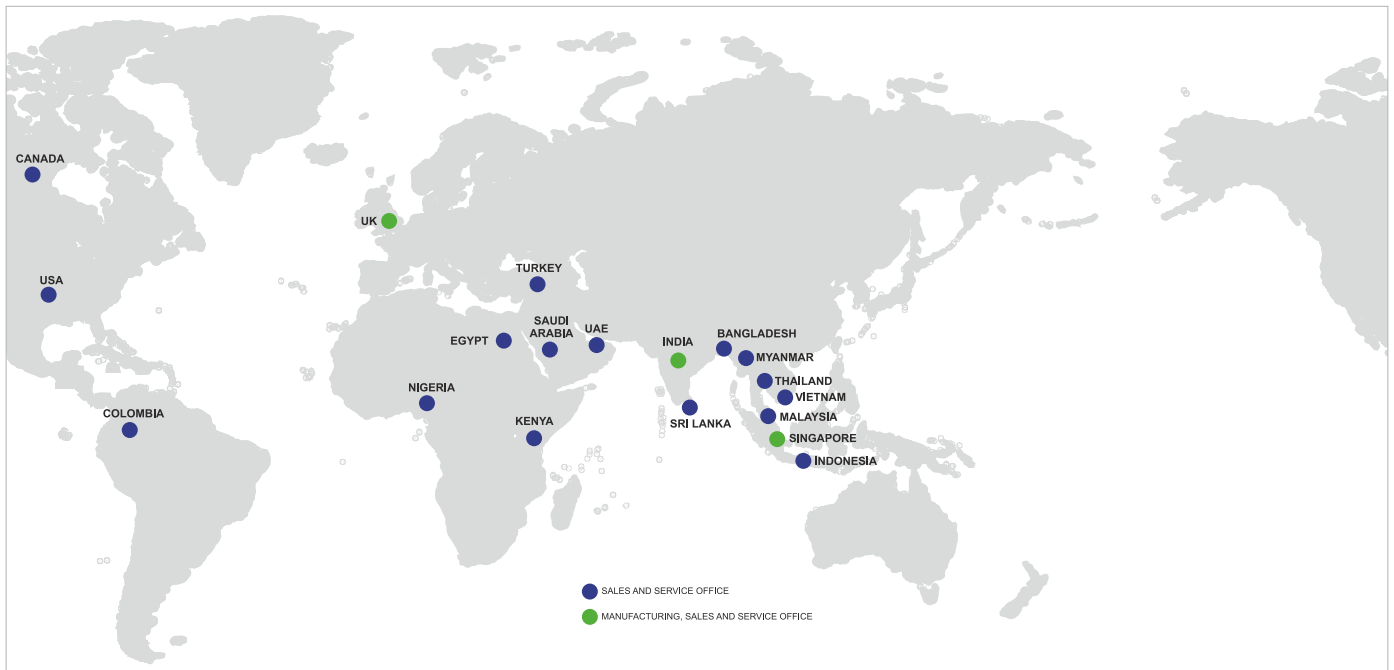


**Safety**  
Establishing standard operating procedures. Identifying anomalies in data to take immediate corrective action.



**Sustainability**  
Reducing water and fuel consumption, and carbon emissions.

# Energising Businesses and Communities Worldwide



## A Multinational with Indian Roots

18	Countries
37	Offices Worldwide
18	Distribution Centres
500	Sales and Services Engineers
8,000	Customers Worldwide

## World Class Technology from World Class Facilities



## Enabling Results



**Process Efficiency**



**Energy Efficiency**



**Optimum Productivity**



**Improved Asset Uptime**



**Environmental Responsibility**



**Safety and Regulatory Compliance**



[www.forbesmarshall.com](http://www.forbesmarshall.com)

Forbes Marshall Arca

Codel International

Krohne Marshall

Forbes Vyncke

Forbes Marshall Steam Systems

### A: Forbes Marshall Pvt. Ltd.

Opp. 106th Milestone, CTS 2220, Mumbai-Pune Road, Kasarwadi, Pune MH 411034 INDIA

**P:** +91(0)20-68138555

**F:** +91(0)20-68138402

**E:** [beyondconnectivity@forbesmarshall.com](mailto:beyondconnectivity@forbesmarshall.com)

**CIN No:** U28996PN1985PTC037806

© All rights reserved. Any reproduction or distribution in part or as a whole without written permission of Forbes Marshall Pvt Ltd, its associate companies or its subsidiaries ("FM Group") is prohibited. Information, designs or specifications in this document are subject to change without notice. Responsibility for suitability, selection, installation, use, operation or maintenance of the product(s) rests solely with the purchaser and/or user. The contents of this document are presented for informational purposes only. FM Group disclaims liabilities or losses that may be incurred as a consequence of the use of this information.



Scan the QR code to enquire