

# EverSense for Condensate Recovery Factor

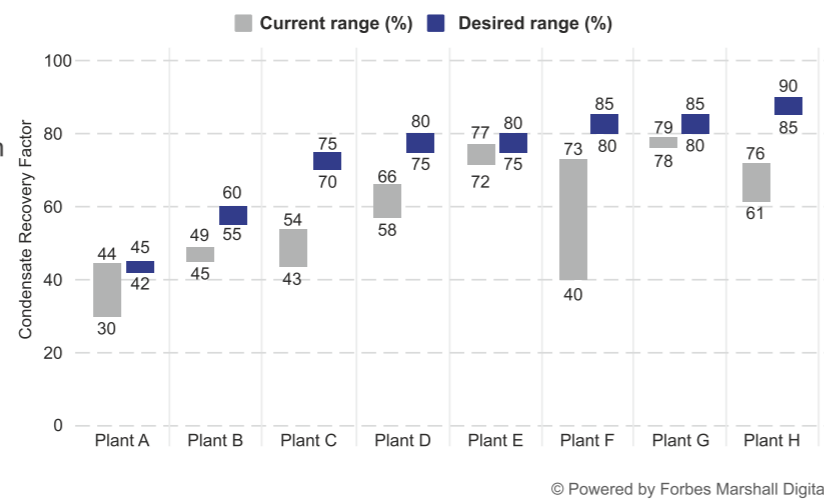


## On average, plant condensate recovery can be improved by 10-15% and sustained through our solution.

In today's dynamic and competitive landscape, where energy costs continue to rise, maintaining an efficient steam system is imperative. A drop in CRF leads to incremental fuel and fresh water consumption in the boiler and a higher effluent load.

### CRF variation causes include:

- Uptime or leakages of mainline and process traps or the condensate pump
- Unnecessary steam loss through a trap bypass valve
- Flash vented, condensate drained
- Feed water tank management
- Direct steam consumption



## We provide actionable insights

### Proactive Issue Resolution

We help bridge the gap between recovered and recoverable condensate to improve the recovery factor. We identify and address reasons for the variation.

### Operational Efficiency

We train your team and help establish standard operating procedures (SOPs) and maintenance practices to ensure asset health. Our deep Industry knowledge results in actionable insights to help maintain uptime of >95%.

### Backed by our wide reach and expertise

Our team of sales and service engineers, based in 18 countries, have experience of over 30 industry segments globally. These specialists visit plants daily, understanding and addressing real needs. And now, you have 24x7 access to this expertise through both, digital service connects and site visits.

## Delivering Benefits



### Safety

Training the maintenance team on standard operating procedures and maintenance practices. Identifying anomalies in data to take immediate corrective action.



### Fuel and Water Savings

Lowering the cost of steam through better overall recovery, by reducing deviations in the recovery factor. Reducing OPEX for fresh water and effluent treatment.



### Reliability

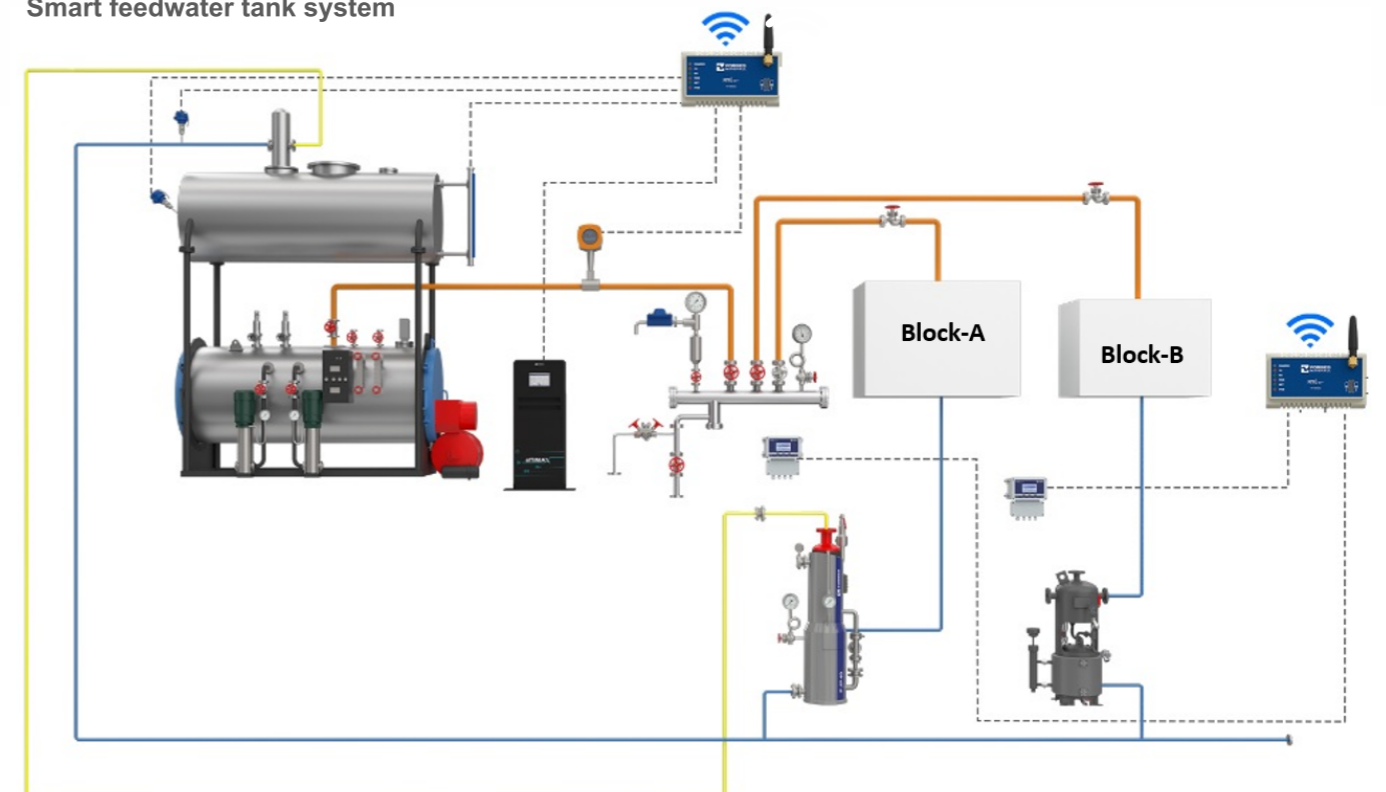
Maintaining >95% uptime for traps and condensate recovery system.



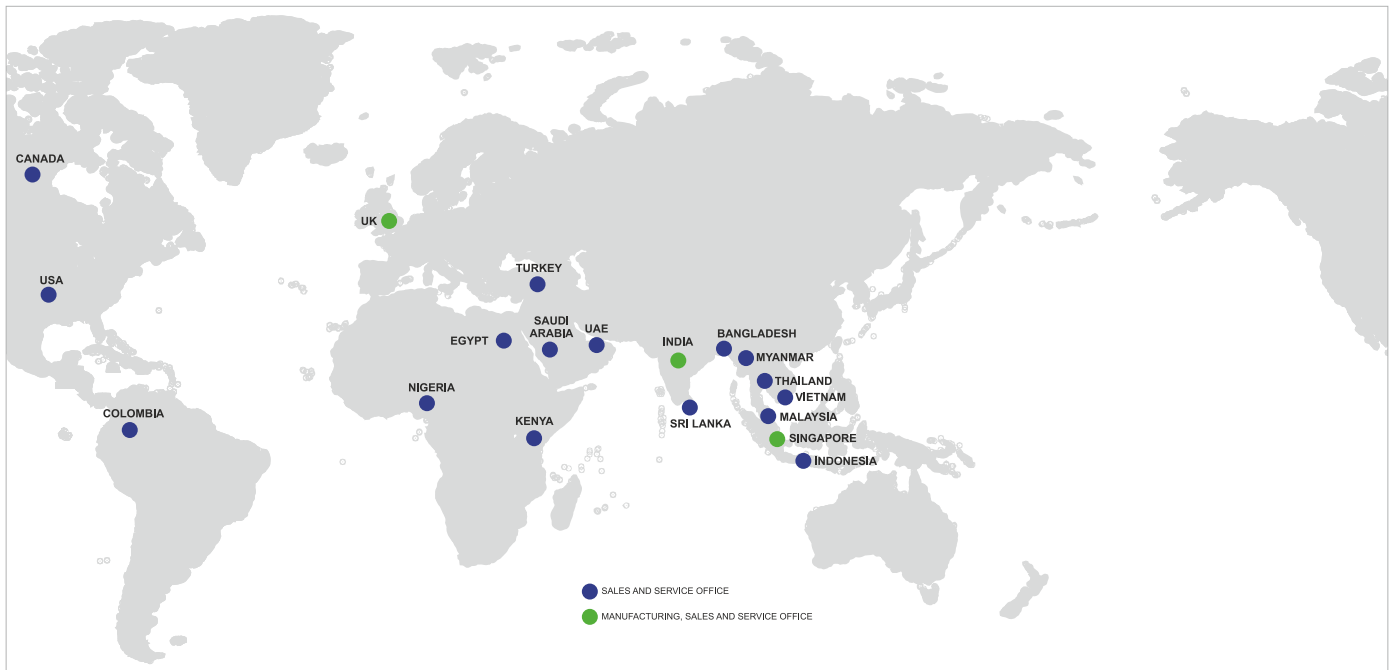
### Sustainability

Reducing water and fuel consumption, and carbon emissions.

## Smart feedwater tank system



# Energising Businesses and Communities Worldwide



## A Multinational with Indian Roots

<b>18</b>	Countries
<b>37</b>	Offices Worldwide
<b>18</b>	Distribution Centres
<b>500</b>	Sales and Services Engineers
<b>8,000</b>	Customers Worldwide

## World Class Technology from World Class Facilities



## Enabling Results



**Process Efficiency**



**Energy Efficiency**



**Optimum Productivity**



**Improved Asset Uptime**



**Environmental Responsibility**



**Safety and Regulatory Compliance**



[www.forbesmarshall.com](http://www.forbesmarshall.com)

Forbes Marshall Arca

Codel International

Krohne Marshall

Forbes Vyncke

Forbes Marshall Steam Systems

### A: Forbes Marshall Pvt. Ltd.

Opp. 106th Milestone, CTS 2220, Mumbai-Pune Road, Kasarwadi, Pune MH 411034 INDIA

**P:** +91(0)20-68138555

**F:** +91(0)20-68138402

**E:** [beyondconnectivity@forbesmarshall.com](mailto:beyondconnectivity@forbesmarshall.com)

**CIN No:** U28996PN1985PTC037806

© All rights reserved. Any reproduction or distribution in part or as a whole without written permission of Forbes Marshall Pvt Ltd, its associate companies or its subsidiaries ("FM Group") is prohibited. Information, designs or specifications in this document are subject to change without notice. Responsibility for suitability, selection, installation, use, operation or maintenance of the product(s) rests solely with the purchaser and/or user. The contents of this document are presented for informational purposes only. FM Group disclaims liabilities or losses that may be incurred as a consequence of the use of this information.



**Scan the QR code to enquire**