

# SOFT510

## Single Orifice Float Trap

### Description

The Forbes Marshall Single Orifice Float Trap SOFT510, is a high pressure carbon steel trap and fitted with fixed bleed mechanism.

### Operating Principle

Condensate causes the float to rise which opens the main valve. This will pass condensate continuously as it enters the trap. The fixed bleed releases air, non-condensable gases and steam that could otherwise lock the trap and causes the condensate to be held back.

### Sizes and Pipe Connections

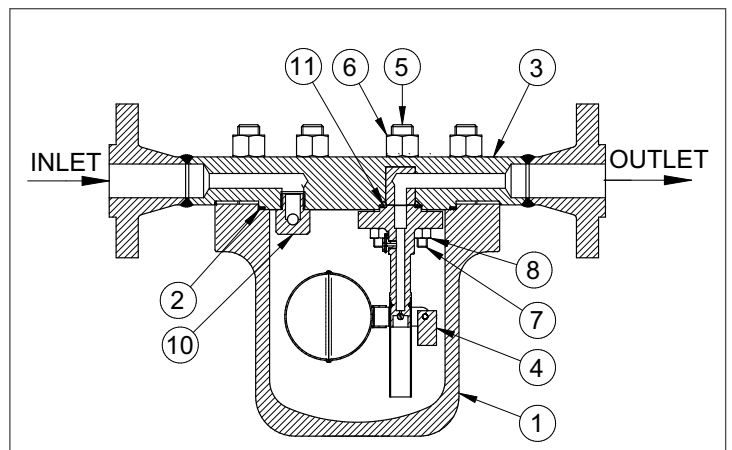
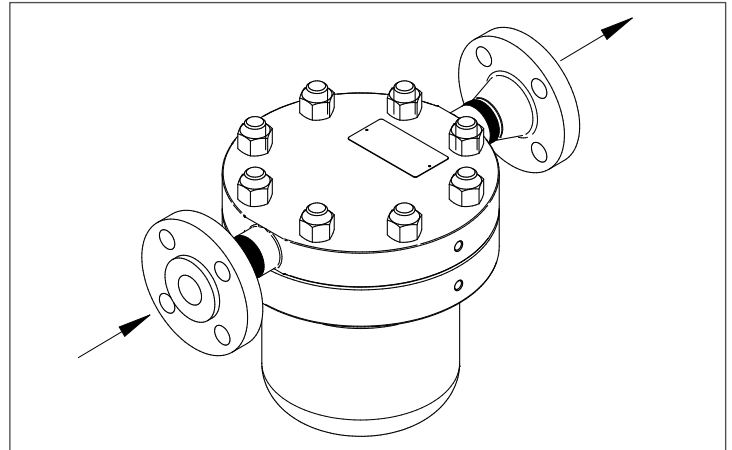
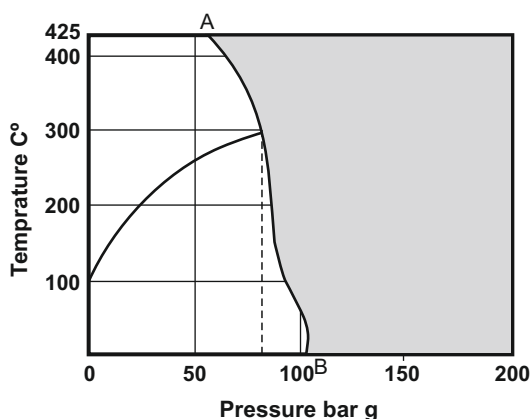
DN15, 20, 25 and 40 with ANSI Class 600 flanged ends and butt weldable ends

### Limiting Conditions

#### Body Design Conditions - ANSI Class 600

PMO Max. Operating Pressure	80 bar g
TMO Max. Operating Temperature	296°C
Min. Operating Temperature	0°C
PMA Max. Allowable Pressure	102 bar g at 38°C
TMA Max. Allowable Temperature	425°C at 57.5 bar g
Cold Hydro test pressure	153 bar g at 38°C (without internals)

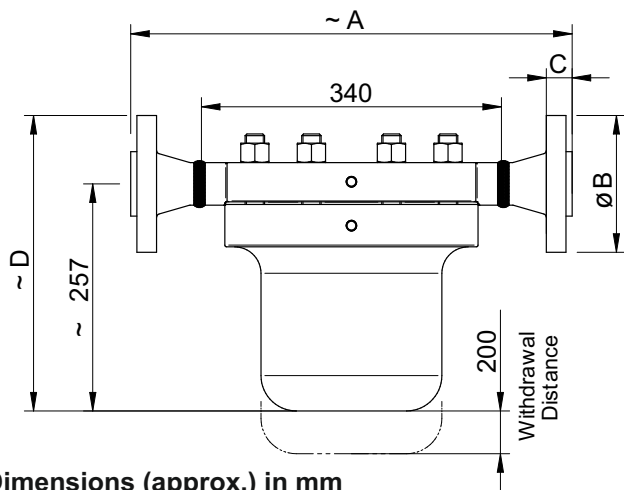
### Operating Range



### Materials

No.	Part	Material
1	Cover	Forged Steel ASTM A105N
2	Cover Gasket	Spiral Wound with Graphite Filler
3	Body	Forged Steel ASTM A105N
4	Mechanism	Stainless Steel
5	Cover Stud	ASTM A193 Gr. B7
6	Cover Nut	ASTM A194 Gr. 2H
7	Mechanism Stud	ASTM A193 Gr. B7
8	Mechanism Nut	ASTM A194 Gr. 2H
9*	Name Plate	Stainless Steel Type 304
10	Deflector	ASTM A276, Ss420
11	Mechanism Gasket	Spiral Wound with Graphite Filler

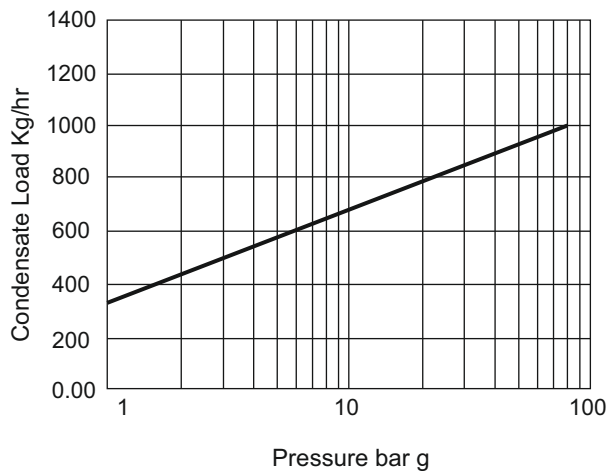
\* Not shown in figure



Dimensions (approx.) in mm

ANSI Flange Class #600						
Size (DN)	A	B	C	D	Wt(Kg)	BWE Wt(Kg)
15	463	95	21.3	305.5	61	60
20	473	115	22.9	315.5	62	
25	483	125	24.5	320.5	63	
40	499	155	29.3	355	65	

### Capacity Chart



### How to Order


Example : 1 no. Single Orifice Float Trap, SOFT510, DN40, with ANSI Class 600 flanged ends.

### Installation

The trap must be fitted horizontally so that the condensate flow corresponds with the arrows on the nameplate. we recommend to, support float trap in the pipeline. Use M12 tapping given on the outer diameters of both body and cover for lifting the product.

**Note: After 24 hours in service the cover nuts must be checked for tightness and tightened to the recommended torque if necessary.**

### Recommended Tightening Torques

Item	Part		Nm
6	Cover Nut	32 A/F	210-240
8	Mechanism Nut	17 A/F	40-45

### Available Spares:

Kit Name	Description
Mechanism Kit	Mechanism with Float Assembly (Pack of 1 No. Each )
Gasket Kit	Cover Gasket & Flange Gasket (Pack of 2 Nos. Each )
Stud & Nut Kit	M10 Stud & Nut (Qty. 4 Nos), M22 Stud & Nut (Qty. 8 Nos)
Float Kit	Ball Float (Pack of 1 No. Each )
Repair Kit	Mechanism with Float Assembly Cover Gasket, Flange Gasket, Deflector, Bleed Screw (Qty. 1 Each ) M10 Stud & Nut (Qty. 4 Nos), M22 Stud & Nut (Qty. 8 Nos )



www.forbesmarshall.com

Forbes Marshall Arca

Codel International

Krohne Marshall

Forbes Vyncke

Forbes Marshall Steam Systems

**A: Forbes Marshall Pvt. Ltd.**  
Opp. 106th Milestone, CTS 2220,  
Mumbai-Pune Road, Kasarwadi,  
Pune MH 411034 INDIA

**P: +91(0)20-68138555**

**F: +91(0)20-68138402**

**E: ccmidc@forbesmarshall.com**

© All rights reserved. Any reproduction or distribution in part or as a whole without written permission of Forbes Marshall Pvt Ltd, its associate companies or its subsidiaries ("FM Group") is prohibited.

Information, designs or specifications in this document are subject to change without notice. Responsibility for suitability, selection, installation, use, operation or maintenance of the product(s) rests solely with the purchaser and/or user. The contents of this document are presented for informational purposes only. FM Group disclaims liabilities or losses that may be incurred as a consequence of the use of this information.

**Forbes Marshall International Pte. Ltd.**

16A, Tuas Avenue 1,  
#05-21, JTC Space @Tuas  
Singapore - 639533

**P: +65 6219 3890**

**CIN No: U28996PN1985PTC037806**