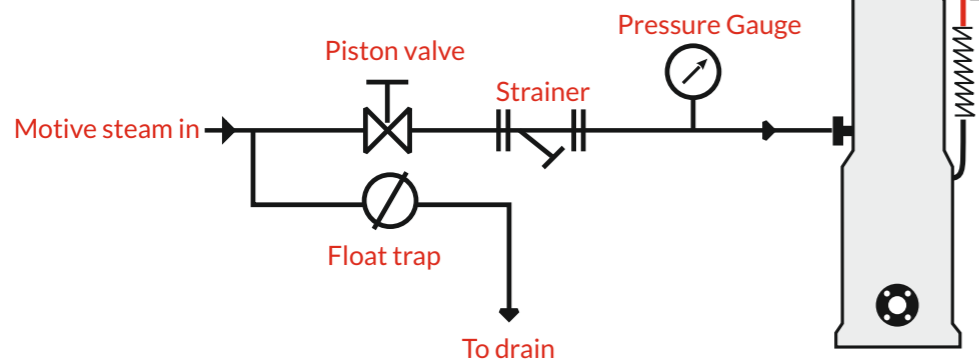


FLASHJET PUMP

INSTALLATION STEPS

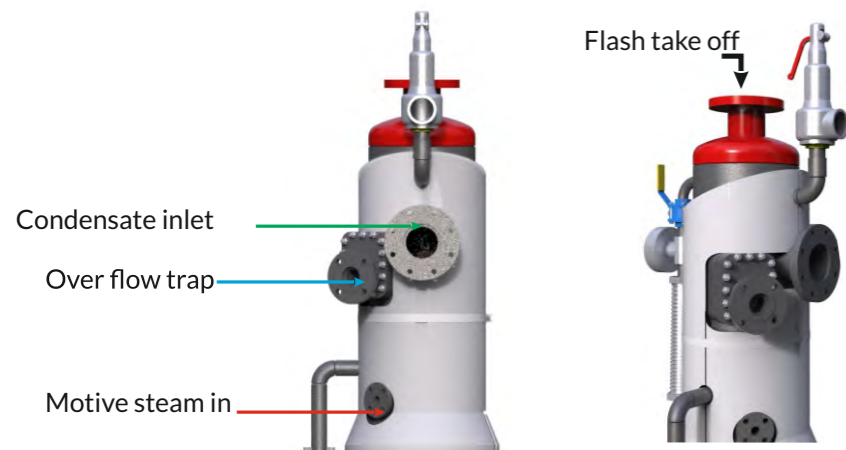
1

Assemble the 15NB piston valve, 15NB 100 mesh strainer, Pressure gauge & float trap as shown in hookup diagram



2

Connect the condensate inlet line to FJP condensate inlet. Please ensure that the overflow line is routed to safe location such that there is no risk to personnel. Also ensure that the flash vent line is routed to suitable application with NRV(customer scope).

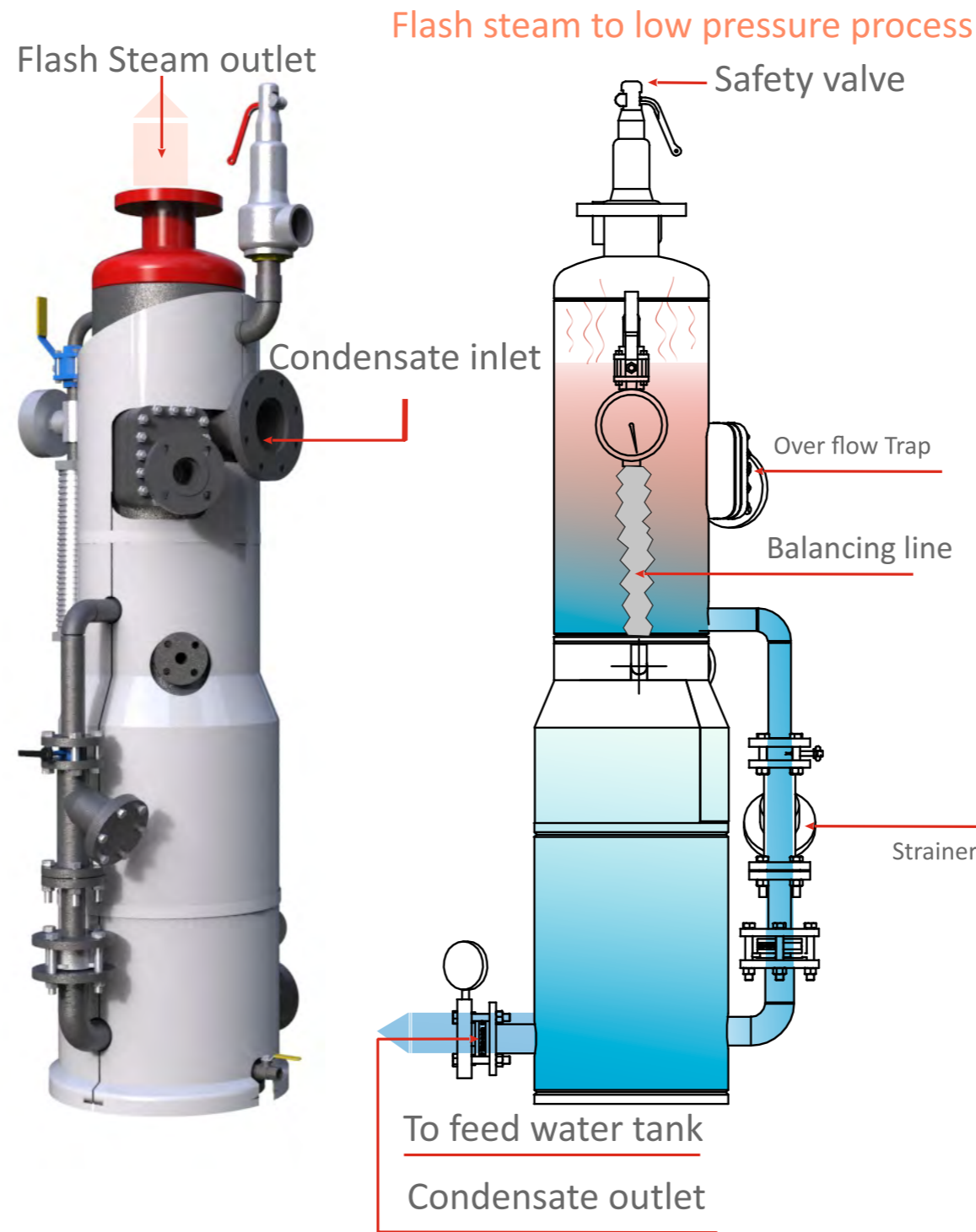
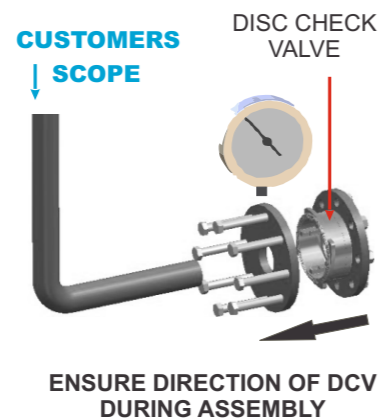


3

* Unscrew the flange of the outlet FMDCV and keep the FMDCV safe preventing any damage.

* Assemble and weld the discharge line with the FMDCV outlet flange.

* Please ensure that no dirt, weld spatter is left while welding.



If the condensate flow to the pump is slow, the pump will not operate till it is full. The strokes will be intermittent.

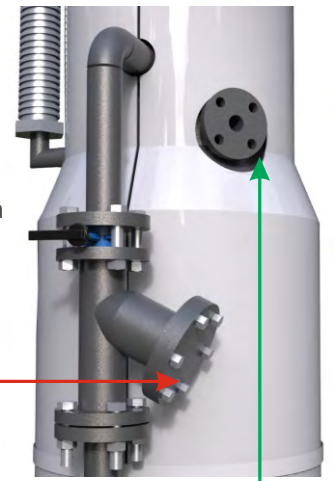
COMMISSIONING STEPS

A

Open the FJP condensate strainer cap & screen to flush the foreign particles & contaminated condensate. Similarly motive steam should also be flushed by removing strainer cap & screen until clean motive media is seen. Reassemble the strainer cap & screen.

Strainer cap

Motive steam in



B

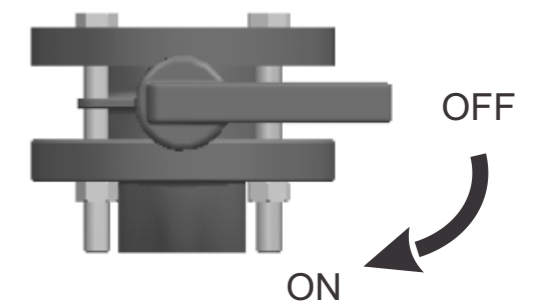
Open the motive steam line piston valve see that steam inlet pressure does not exceed 8.7 bar g for FJP40 & FJP80 & 7 barg for FJP80X. (Refer step 1 of installation steps from this chart.)

C

Allow the condensate flow to FJP

D

BUTTERFLY VALVE



Check that the isolation valve on the pump is in open condition and observe the pump performance.

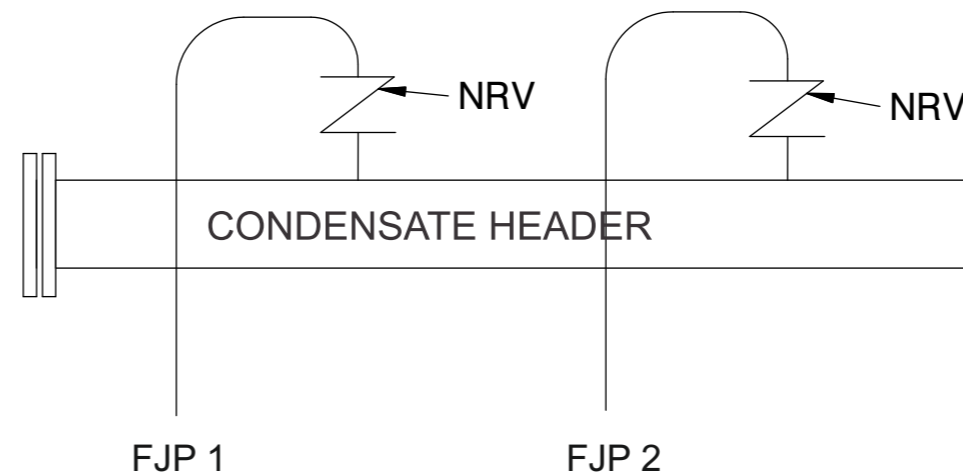
PRECAUTIONS

1. Do not allow the motive (Steam/ Air) pressure to fluctuate.
2. Maximum Flash pressure should not exceed 1.5 bar g.
3. Do not install crooked discharge line.
4. The discharge line should never be smaller than bore of the outlet check valve.
5. If the condensate discharge line is more than 100 mtrs long then it should be properly sized to handle the quantity of condensate . For more details please contact Forbes Marshall.
6. Do not close the isolation valve mounted on exhaust line under any circumstances.
7. Total back pressure on FJP has to be more than flash pressure for its working.

CAPACITY CHART

Motive Steam Pressure Bar g	Total lift or Back Pressure bar g	Capacity kg/hr		
		FJP40	FJP80	FJP80X
8.7	0.5	3347	7358	
8.7	1	3022	5870	
8.7	1.5	2869	5310	
8.7	2	273	4848	
8	0.5	3319	7126	
8	1	3022	5550	
8	1.5	2823	4872	
8	2	2649	4340	
7	0.5	3254	6826	11842
7	1	2962	5281	10548
7	1.5	2768	4696	9254
7	2	2594	4228	7960
6	0.5	3196	6498	9102
6	1	2858	4963	8358
6	1.5	2703	4484	7614
6	2	2569	4087	6870
5	0.5	3124	6305	8495
5	1	2757	4811	7997
5	1.5	2575	4335	7001
5	2	2415	3945	6006
4	0.5	2837	5179	8429
4	1	2600	4246	7437
4	1.5	2372	3557	6043
4	2	2184	3060	4649
3	0.5	2725	4480	7379
3	1	2359	3500	6039

8. If you have to connect more than one pump to common condensate return header please refer below figure



* NRV: SIZE EQUAL TO FJP OUTLETSIZE